

Field Attachable

425 'N' Series

To determine the correct length of hose, subtract the cut-off factor for each end fitting from the overall length of assembly.

^a Swivel nuts are universal — both SAE 37° and 45° connections.

Hose End 425 'N' Series

Ordering Information: Order individually by part number. Order o-rings by catalog number; reference individual hose listing for details. For split flange kits, reference pages L-89-92.

Application:

High pressure hydraulic applications such as construction, farm implement and industrial equipment.

Compatible Hose: H425

Pressure: Determined by maximum working pressure for hose size. See pages A-15-16 for working pressure ratings for hose end configurations.

Material: AISI/SAE 12L14 carbon steel

Plating: Zinc; clear trivalent chromate

Advantages: Good selection of hose ends. Non-mandrel assembly. Wide variety of applications because of its use with H425 hose.

Assembly Instructions:

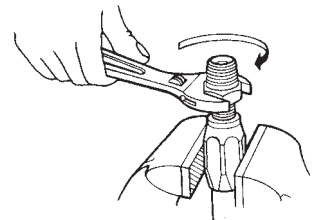
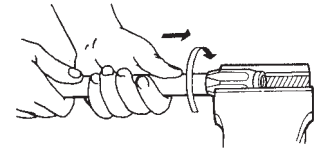
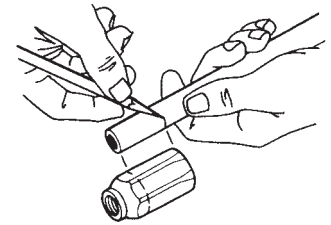
Due to the high torque required to assemble larger sizes, it is recommended that 425 'N' Series hose ends be assembled with the T-300 assembly machine (page N-71).

1. Lubricate insert threads and I.D. of hose.
2. Measure from end of hose and mark the socket depth. Use notch on socket or see insertion depth chart below.
3. Screw hose into socket (left-hand thread) to the depth marked on hose.
4. Screw insert into socket until insert touches socket.

Label Set: FS-700

Note:

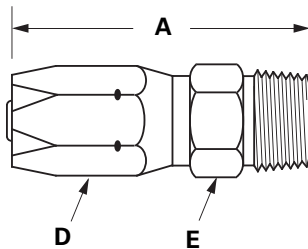
Refer to current price list for availability of cataloged items. Configurations and dimensions subject to change without notice.



Insertion Depth

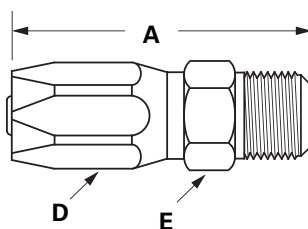
Hose I.D.	Screw Hose Into Socket
1/4	1"
3/8	1-5/32"
1/2	1-3/16"
3/4	1-5/16"
1	1-9/16"
1-1/4	1-7/8"
1-1/2	2"
2	1-15/16"

Male Pipe Rigid



Hose I.D.	Pipe Size	Part Number	Thread Size	A	Hose Cut-Off Factor	Hole Dia.	Hex D	Hex E
1/4	1/8	42504N-102	1/8-27	2.18	1.19	0.17	13/16	7/16
1/4	1/4	42504N-104	1/4-18	2.36	1.38	.17	13/16	9/16
3/8	1/4	42506N-104	1/4-18	2.50	1.31	.27	15/16	9/16
3/8	3/8	42506N-106	3/8-18	2.53	1.38	.27	15/16	11/16
1/2	3/8	42508N-106	3/8-18	2.58	1.38	.39	1-1/16	11/16
1/2	1/2	42508N-108	1/2-14	2.83	1.63	.39	1-1/16	7/8
1/2	3/4	42508N-112	3/4-14	2.86	1.69	.39	1-1/16	1-1/16
3/4	3/4	42512N-112	3/4-14	2.98	1.69	.61	1-3/8	1-1/16
1	1	42516N-116	1-11-1/2	3.59	2.00	.81	1-3/4	1-3/8
1-1/4	1-1/4	42520N-120	1-1/4-11-1/2	4.37	2.44	1.05	2-1/4	1-11/16
1-1/2	1-1/2	42524N-124	1-1/2-11-1/2	4.71	2.69	1.28	2-1/2	2

JIC 37° Male Rigid



Hose I.D.	Pipe Size	Part Number	Thread Size	A	Hose Cut-Off Factor	Hole Dia.	Hex D	Hex E
1/4	1/4	42504N-504	7/16-20	2.35	1.38	.17	13/16	9/16
1/4	5/16	42504N-505	1/2-20	2.35	1.38	.17	13/16	9/16
1/4	3/8	42504N-506	9/16-18	2.39	1.38	.17	13/16	5/8
3/8	3/8	42506N-506	9/16-18	2.53	1.38	.27	15/16	5/8
3/8	1/2	42506N-508	3/4-16	2.69	1.50	.27	15/16	13/16
1/2	1/2	42508N-508	3/4-16	2.74	1.56	.39	1-1/16	13/16
1/2	5/8	42508N-510	7/8-14	2.87	1.69	.39	1-1/16	15/16
3/4	3/4	42512N-512	1-1/16-12	3.09	1.75	.61	1-3/8	1-1/8
1	1	42516N-516	1-5/16-12	3.56	1.94	.81	1-3/4	1-3/8

K

Hose Ends - Field Attachable

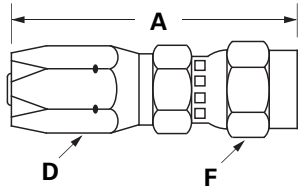
Field Attachable

425 'N' Series

To determine the correct length of hose, subtract the cut-off factor for each end fitting from the overall length of assembly.

^a Swivel nuts are universal — both SAE 37° and 45° connections.

Female Pipe Swivel

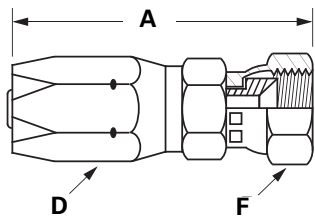


Hose I.D.	Pipe Size	Part Number	Thread Size	A	Hose Cut-Off Factor	Hole Dia.	Hex D	Hex F
1/2	1/2	42508N-258	1/2-14	3.89	2.75	.39	1-1/16	1-1/8
3/4	3/4	42512N-262	3/4-14	4.09	2.81	.61	1-3/8	1-3/8

Note:
Swivel for installation purposes only.
(Not for temperatures above 200°F.)

JIC 37° Female Swivel

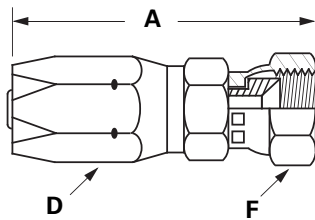
(Exceptions Noted)



Hose I.D.	Pipe Size	Part Number	Thread Size	A	Hose Cut-Off Factor	Hole Dia.	Hex D	Hex F
1/4	1/4	42504N-604 ^a	7/16-20	2.49	1.50	.17	13/16	9/16
1/4	5/16	42504N-605 ^a	1/2-20	2.59	1.56	.17	13/16	5/8
1/4	3/8	42504N-606	9/16-18	2.65	1.63	.17	13/16	11/16
3/8	3/8	42506N-606	9/16-18	2.79	1.63	.27	15/16	11/16
3/8	1/2	42506N-608 ^a	3/4-16	2.96	1.81	.27	15/16	7/8
1/2	1/2	42508N-608 ^a	3/4-16	3.01	1.81	.39	1-1/16	7/8
1/2	5/8	42508N-610 ^a	7/8-14	3.02	1.88	.39	1-1/16	1
3/4	5/8	42512N-610 ^a	7/8-14	3.14	1.88	.48	1-3/8	1
3/4	3/4	42512N-612	1-1/16-12	3.26	2.00	.61	1-3/8	1-1/4
3/4	7/8	42512N-614	1-3/16-12	3.38	2.06	.61	1-3/8	1-3/8
1	1	42516N-616	1-5/16-12	4.19	2.63	.81	1-3/4	1-1/2
1-1/4	1-1/4	42520N-620	1-5/8-12	4.76	2.75	1.08	2-1/4	2
1-1/2	1-1/2	42524N-624	1-7/8-12	5.04	3.00	1.28	2-1/2	2-1/4

^a Swivel nuts are universal — both SAE 37° and 45° connections.

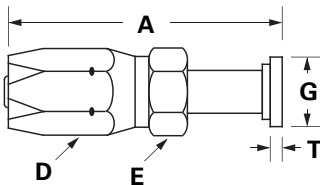
SAE 45° Female Swivel



Hose I.D.	Pipe Size	Part Number	Thread Size	A	Hose Cut-Off Factor	Hole Dia.	Hex D	Hex F
3/8	3/8	42506N-406	5/8-18	2.67	1.50	.27	15/16	3/4
3/4	3/4	42512N-412	1-1/16-14	3.27	2.00	.61	1-3/8	1-1/4

Split Flange Straight

(SAE Code 61)



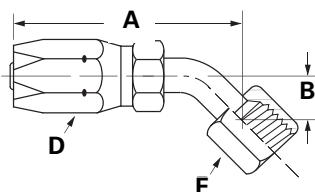
Hose I.D.	Nom. Pipe Size	Part Number	Replacement O-Ring (Not Included)	A	Hose Cut-Off Factor	Hole Dia.	Hex D	Hex E	G	T
3/4	3/4	42512N-G12	12x252	3.81	2.50	.58	1-3/8	1-15/16	1.50 (38 mm)	.265
1	1	42516N-G16	16x252	4.02	2.50	.76	1-3/4	1-1/4	1.75 (44 mm)	.315
1-1/4	1-1/4	42520N-G20	20x252	5.32	3.50	1.01	2-1/4	1-5/8	2.00 (51 mm)	.315

(For Split Flange Kits, see pages L-89 thru L-92.)

JIC 37° Female Swivel 45°

Tube Elbow

(Refer to Footnotes)



Hose I.D.	Pipe Size	Part Number	Thread Size	A	Hose Cut-Off Factor	Hole Dia.	Hex D	Hex E
1/4	1/4	42504N-684 ^a	7/16-20	2.86	.33	1.81	.15	13/16
3/8	3/8	42506N-686	9/16-18	3.15	.39	2.00	.25	15/16
1/2	1/2	42508N-688 ^a	3/4-16	3.46	.56	2.25	.36	1-1/16
1/2	5/8	42508N-690 ^a	7/8-14	3.92	.64	2.50	.36	1-1/16
3/4	3/4	42512N-692	1-1/16-12	4.17	.73	2.88	.55	1-3/8
1	1	42516N-696	1-5/16-12	5.42	1.10	3.75	.76	1-3/4

^a Swivel nuts are universal — both SAE 37° and 45° connections.

K

Hose Ends - Field Attachable